



CURV

GRAPHICS FOR SPACES

CURV SPECIALIZES IN

GRAPHICS FOR SPACES

Curv offers **collaborative design, in-house production, fabrication, and installation** of superior and uniquely crafted environmental graphics.

We collaborate with developers, architects, and designers to bring their vision to life in adaptive reuse, corporate, hospitality, mixed-use, retail, educational, and residential settings, while honoring the brand, the history of the building, or flavor of the neighborhood.



IN HONOR OF
WOSU PUBLIC
MEDIA STAFF

MEDIA LIBRARY
020

JOAN AND JACK GEORGE



STAIR 1
FLOORS B-5
ROOF ACCESS

1

LEVEL 1
EXIT
THIS LEVEL

LEVEL 1

MAXIMUM
OCCUPANCY
95



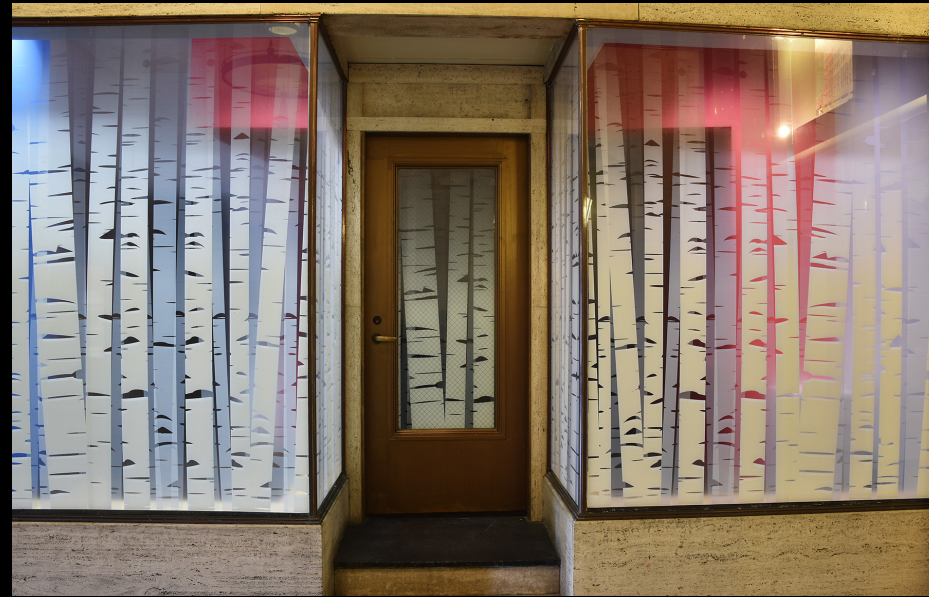
EAST STAIR
FLOORS 1-5
ROOF ACCESS

2

FLOOR 2
EXIT DOWN
TO FLOOR 1









CURV'S PASSION FOR

ADAPTIVE REUSE

Our team is comprised of photographers, designers, and artisans, with a singular goal: preserve the original architectural details through custom created artwork, décor, and signage.

Curv produces signature graphic installations that express the building's architectural history and neighborhood's unique character and lifestyle.

Whether your project is converting a factory into residences or re-purposing abandoned industrial space into an office complex, we chronicle the building's heritage, add art and dimension to the building, while adding value to your investment.

First things first: documentation via photography.

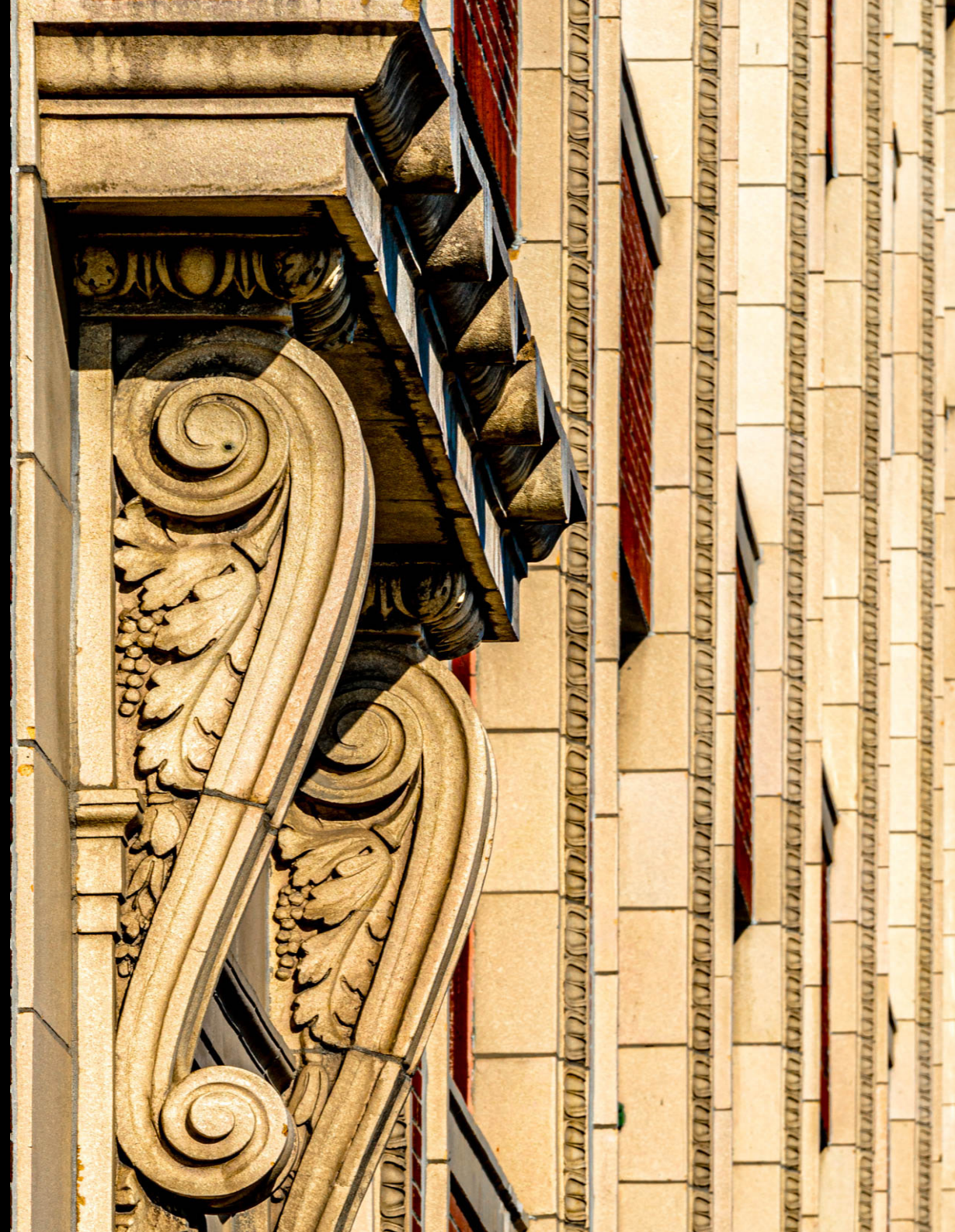
KROGER BAKERY BUILDING

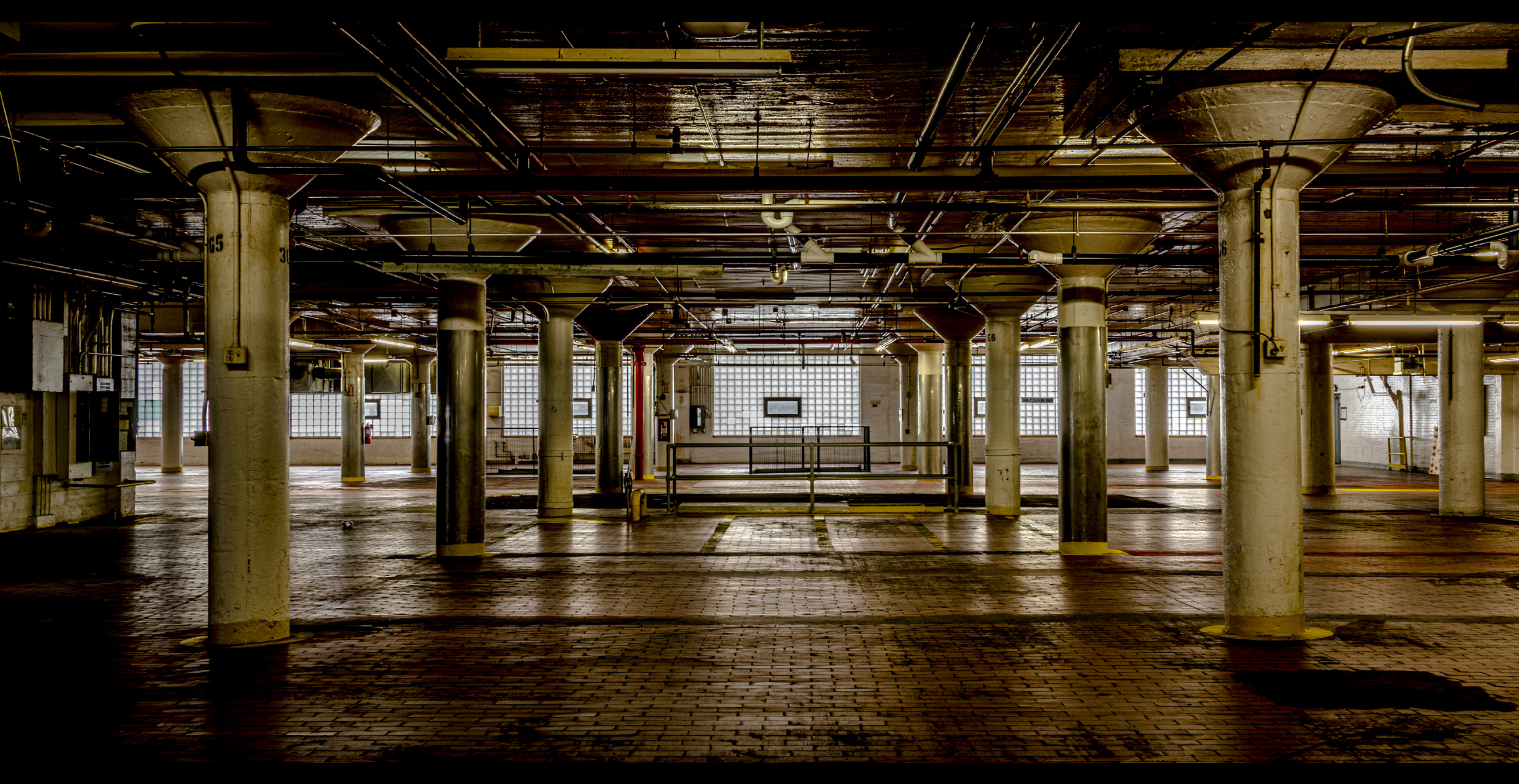
COLUMBUS, OH

Historic Building Photography

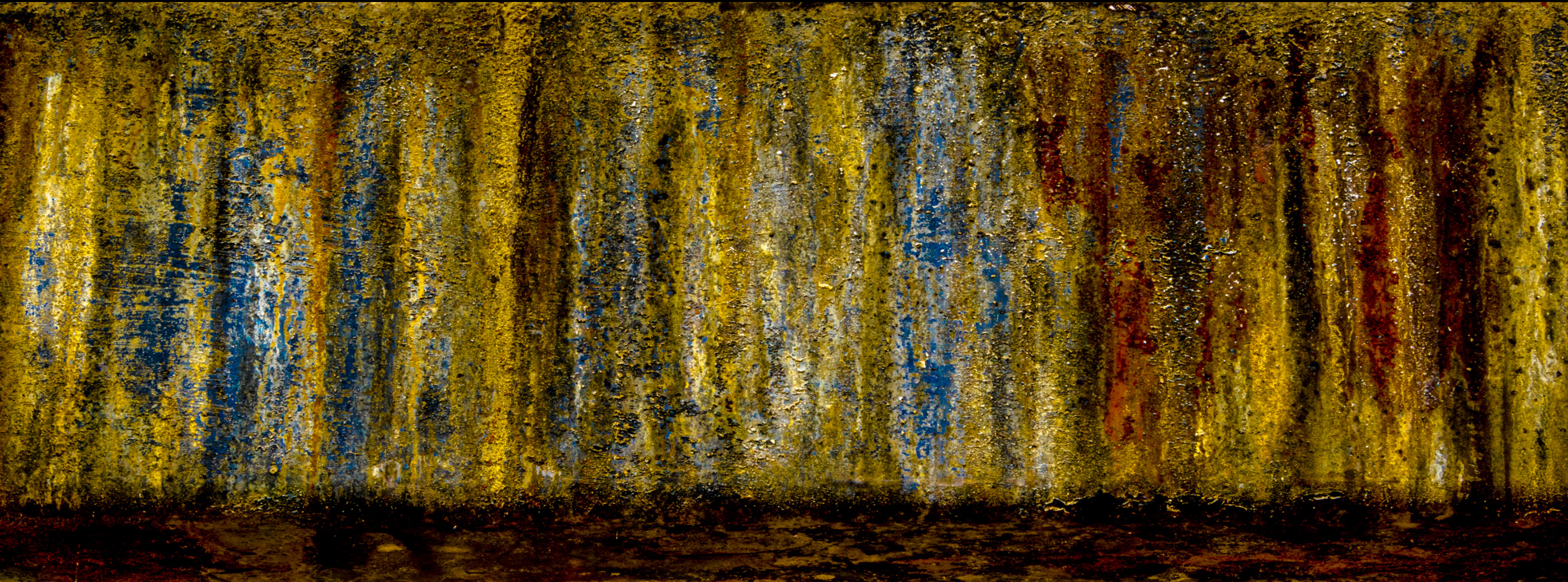


KROGER BAKERY BUILDING
COLUMBUS, OH











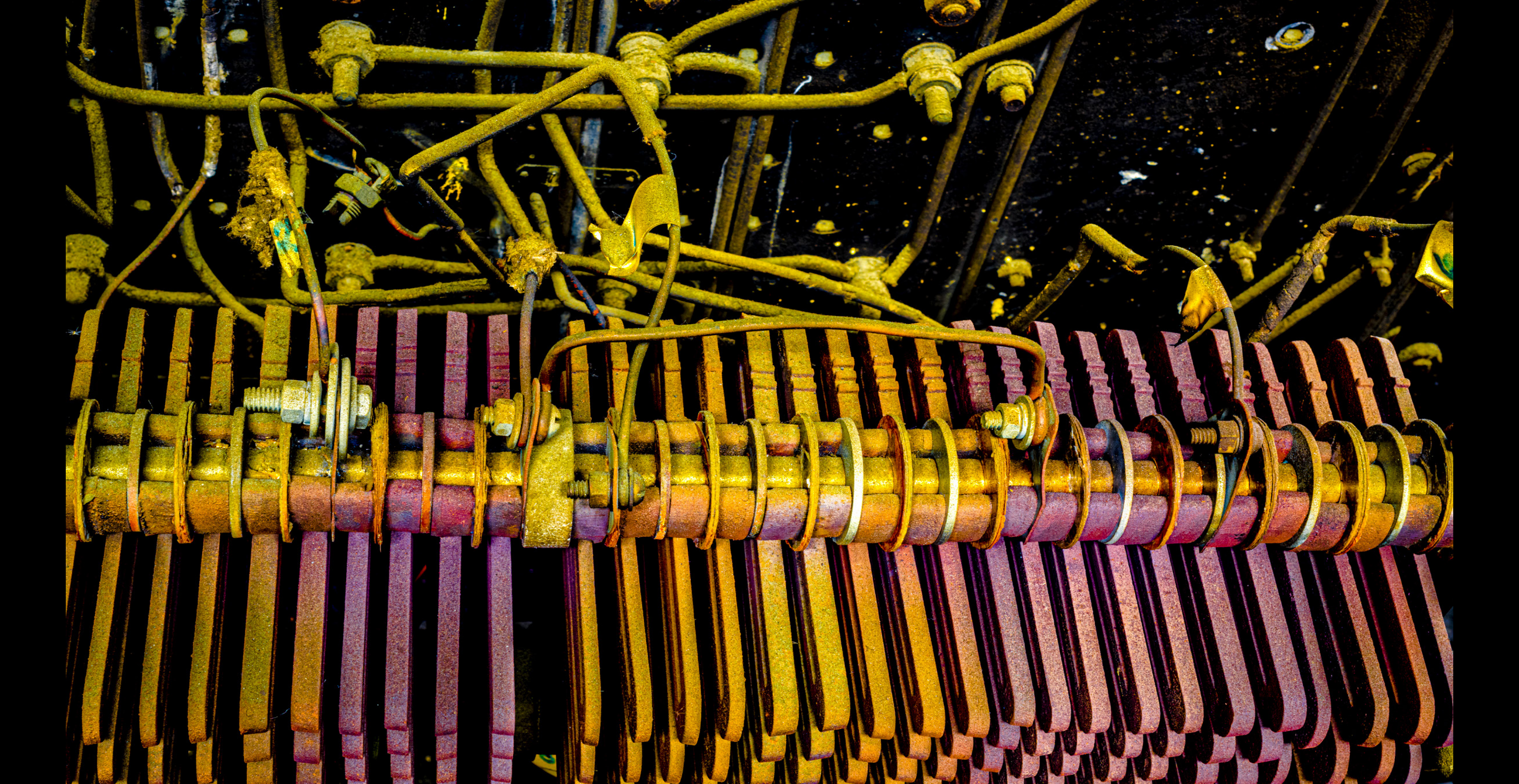
KROGER BAKERY BUILDING
COLUMBUS, OH



KROGER BAKERY BUILDING
COLUMBUS, OH























THE DAYTON ARCADE

DAYTON, OH

Historic Building Photography







THE DAYTON ARCADE
DAYTON, OH





THE DAYTON ARCADE
DAYTON, OH









THE DAYTON ARCADE
DAYTON, OH

























CURV'S PASSION FOR

ADAPTIVE REUSE

During the main bulk of the renovation process, Curv ideates and collaborates with your design team to select and curate the appropriate photos, and design any supporting graphics, wayfinding, and signage that express the building's architectural history.

As the renovation work comes to a close, Curv readies and produces those signature graphics and prepares them for install.

Next up: curation and installation.



THE BALDWIN PIANO BUILDING
CINCINNATI, OH



THE BALDWIN PIANO BUILDING
CINCINNATI, OH





THE
BALDWIN

▲ LOBBY
01-07
08-02
03-10
WALKWAY

THE BALDWIN PIANO BUILDING | DIMENSIONAL ELEMENTS AND FRAMED ART
CINCINNATI, OH





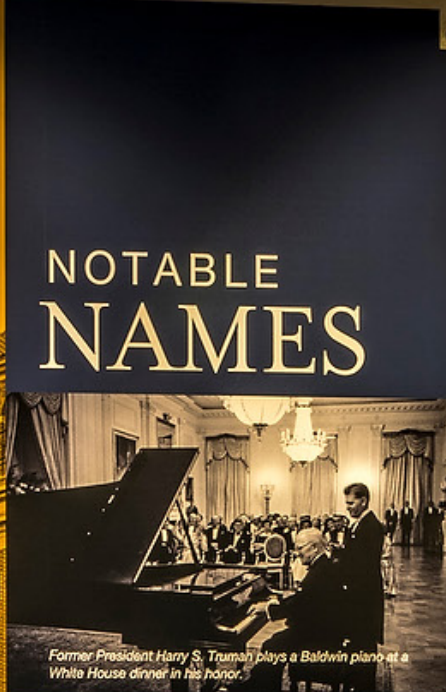
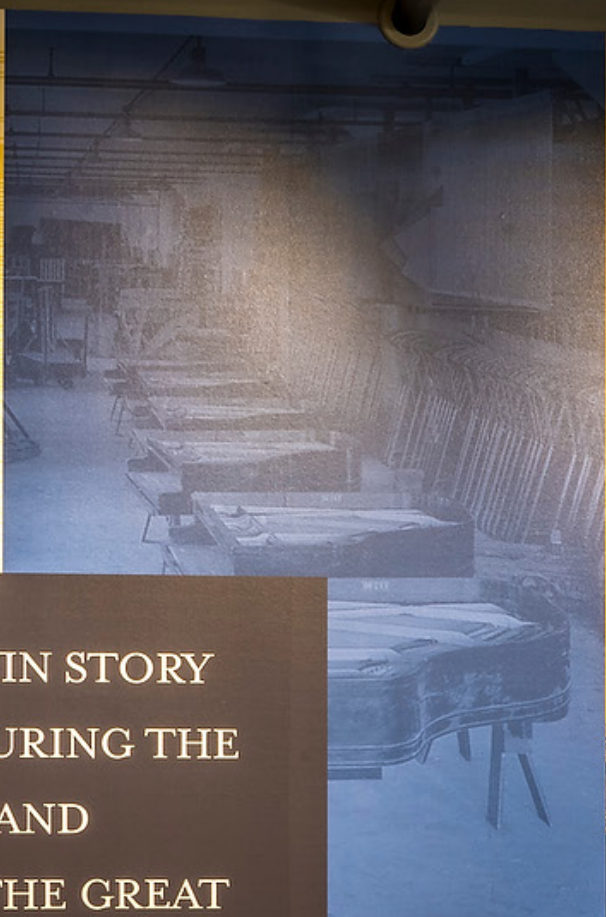




THE BALDWIN PIANO BUILDING | WALLCOVERING
CINCINNATI, OH







THE BALDWIN STORY STARTED DURING THE CIVIL WAR, AND SURVIVED THE GREAT DEPRESSION, TWO WORLD WARS AND TWO SIGNIFICANT FIRES.

NEW BALDWIN MANUFACTURING FACILITY IS BUILT IN CINCINNATI.

NOTABLE NAMES

Former President Harry S. Truman plays a Baldwin piano at a White House dinner in his honor.

MANY DISTINGUISHED MUSICIANS HAVE CHOSEN TO COMPOSE AND PERFORM USING BALDWIN PIANOS.

- IGOR STRAVINSKY | LEONARD BERNSTEIN
- RAY CHARLES | LIBERACE | RICHARD CARPENTER
- BILLY JOEL | PAUL SHAFFER
- CAT STEVENS | CARLY SIMON

DURING THE SECOND WORLD WAR, THE BALDWIN PIANO FACTORIES WERE USED TO BUILD WOODEN AIRPLANE COMPONENTS, SUCH AS PARTS FOR THE CURTISS-WRIGHT C-76 CARAVAN.



BY 1973, BALDWIN HAD PRODUCED MORE THAN 1,000,000 PIANOS.



THE JULIAN SHOE FACTORY

COLUMBUS, OH

Historic Building, Adaptive Reuse



THE JULIAN SHOE FACTORY
COLUMBUS, OH

















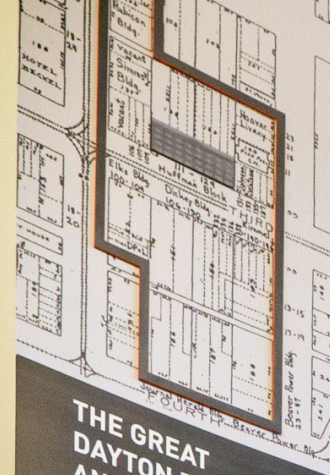


THE HUFFMAN

DAYTON, OH

Historic Building, Adaptive Reuse





THE GREAT DAYTON FLOOD AND THE FIRE BLOCKS DISTRICT

The Great Dayton Flood of 1913 was the largest natural disaster in Ohio's history. The flood was a result of 8-11 inches of rain falling over three days in mid-March, swelling the Great Miami River and flooding downtown Dayton up to 20 feet deep.

To top it off, there was a gas explosion downtown that started a fire and destroyed more of a city block, along with many additional buildings that couldn't be saved.

The disaster brought Daytonians together and there was a heroic effort to rebuild the area. This area is now referred to as the Fire Blocks District and is being revitalized once again.

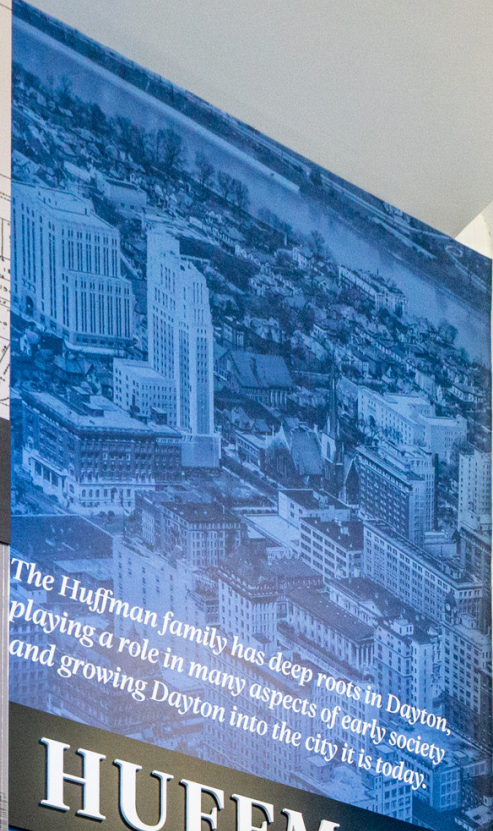
THE HUFFMAN BUILDING

On May 14, 1916 the Dayton Daily News announced that the Huffman family had taken out a permit for the construction of a \$125,000 building on the north side of East Third between Jefferson and St. Clair streets. Built in 1914, this Chicago Commercial style building is centrally located in the heart of the Fire Blocks District.

The Huffman Loft building is the base of lifestyle development in the district with 72 apartments for rent and with the first floor of 24,000 sq. ft. of retail space.

The Windsor Companies is proud to be part of the Dayton community as we work to revitalize the Fire Blocks District. We live by the motto "We Build Better." This is more than a saying, it is a mission. It is inspired by a responsibility to our clients, our team members and the communities we serve.

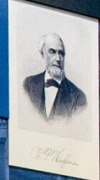
Visit FireBlocksDistrict.com to learn more.



The Huffman family has deep roots in Dayton, playing a role in many aspects of early society and growing Dayton into the city it is today.

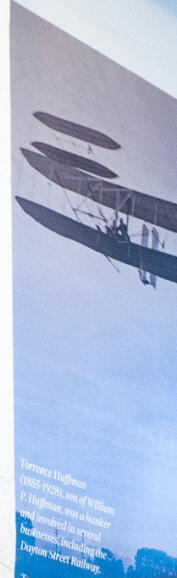
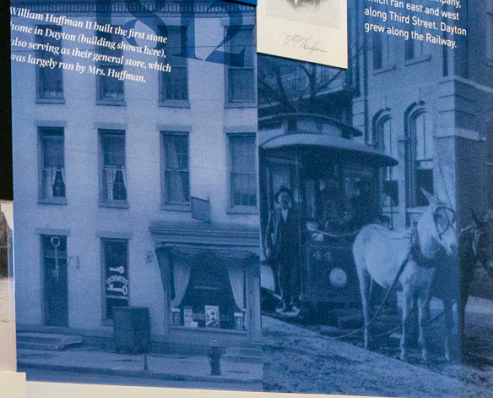
HUFFMAN

William Huffman II (1769-1866) was the first of the Huffman family to move to Dayton in 1812, starting the family legacy.



William P. Huffman (1813-1888) is best known for starting the Dayton Street Railway Company, which ran east and west along Third Street, Dayton grew along the Railway.

William Huffman II built the first store in Dayton (building shown here), also serving as their general store, which was largely run by Mrs. Huffman.



Torrence Huffman (1865-1928), son of William P. Huffman, was a banker and inventor in several businesses, including the Dayton Street Railway.

Torrence saw potential in the Wright brothers and lent them land so they could test their airplane designs. This spot is known as Huffman Prairie.

George P. Huffman (1867-1907), brother of Torrence Huffman, brought the Davis Wright Machine Company of Worcester, New York, and brought it to Dayton in 1892, along with his own 40 employees and four families. This was an important move for Dayton, with the company producing bicycles for about 100 people.



Noting the popularity of bicycles on the rise, George P. Huffman produced the first Davis Spring Machine bicycle, the first step in what would eventually become the Huffly Bicycle Company.



HUFFLY BRAND
HUFFLY BRAND
HUFFLY BRAND

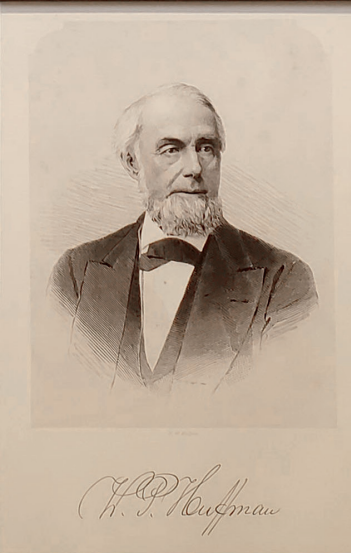
Horace McKee Huffman Sr. (1885-1945), son of George P. Huffman, started Huffman Manufacturing Company in 1924, which made Dayton branded bicycles through 1949.

In 1949, Huffman Manufacturing created their first Huffly children's bicycle. By 1953, they sold all of their bicycles under the Huffly brand. Huffly's popularity grew and went on to become one of the world's largest bicycle brands.

*playing a role in many aspects of early society
and growing Dayton into the city it is today.*

HUFFMAN

William Huffman II (1769-1866)
was the first of the Huffman
family to move to Dayton in
1812, starting the family legacy.



William P. Huffman
(1813-1888) is best known
for starting the Dayton
Street Railway Company,
which ran east and west
along Third Street. Dayton
grew along the Railway.

*William Huffman II built the first stone
home in Dayton (building shown here),
also serving as their general store, which
was largely run by Mrs. Huffman.*

pularity of
e rise, George
roduced the
wing Machine
rst step in what
ually become
ycle Company.

Co. Inc.
DAYTON, OH

The Davis Sewing Machine
Bicycle parts were also sold
to the Wright brothers where
they used their frames and
parts to build Wright bicycles
with their first model coming
out in 1896



There's only one...
HUFFY

Horace McKee Huffman Sr. (1885-1945),
son of George P. Huffman, started
Huffman Manufacturing Company
in 1924, which made Dayton branded
bicycles through 1949.

*In 1949, Huffman Manufacturing created
their first Huffy children's bicycle. By 1953,
they sold all of their bicycles under the
Huffy brand. Huffy's popularity grew and
went on to become one of the world's
largest bicycle brands.*

THE HARRIS

COLUMBUS, OH

Historic Building, Adaptive Reuse



1887 The Nursery was established, originally located on South Fourth St.

1902 The Ohio Avenue Day Nursery was established for African-American youth in 1902 at this location. The house was then purchased in 1906.

1917 This house was substantially enlarged as a new, modern nursery, made possible through the Tuttle Fund, a legacy from miss Catherine Tuttle.

1954 A three-level addition was added to the south side of the building to accommodate overcrowding.

THE HARRIS

*Windsor Terrace Nursery
Nursery Group for year children 180
1/4 week 395*

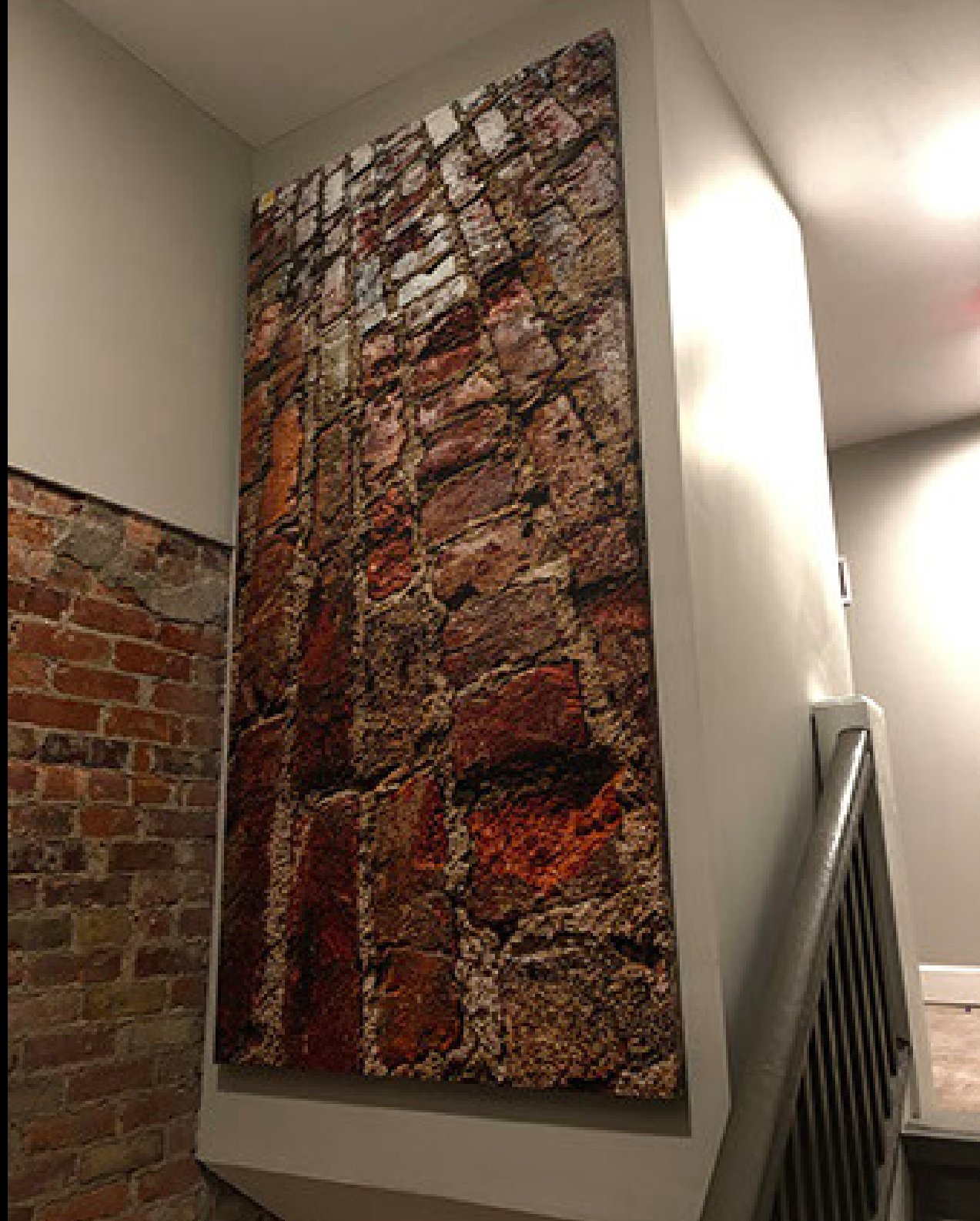
THE HARRIS

Stanley E. Harris is a noted business executive, community servant and church leader. He has championed affordable housing in Franklin County through his many years of dedicated service as Chairman of the Board of Commissioners of the Columbus Metropolitan Housing Authority.

A Columbus native, Stan is an alumnus of Windsor Terrace housing community (now known as Rosewind). Stan graduated from the University of Notre Dame and earned an MBA from Ohio Dominican University. Stan retired in 2016 as Vice President of PNC Bank after a banking career that spanned more than 36 years.

The Harris was dedicated in honor of Stanley E. Harris on February 26, 2020

102



THE BARRETT SCHOOL

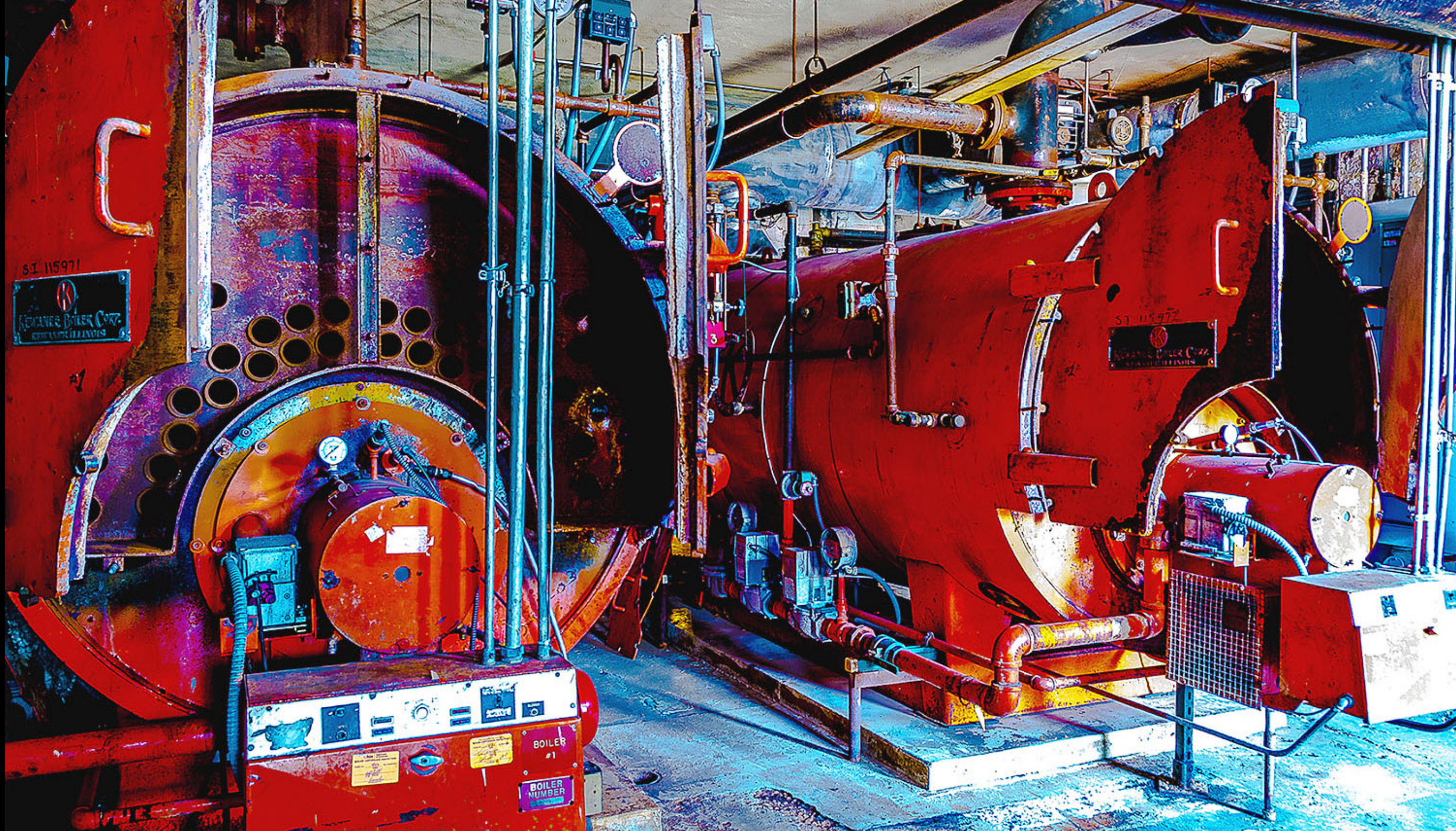
COLUMBUS, OH

Historic Building, Adaptive Reuse













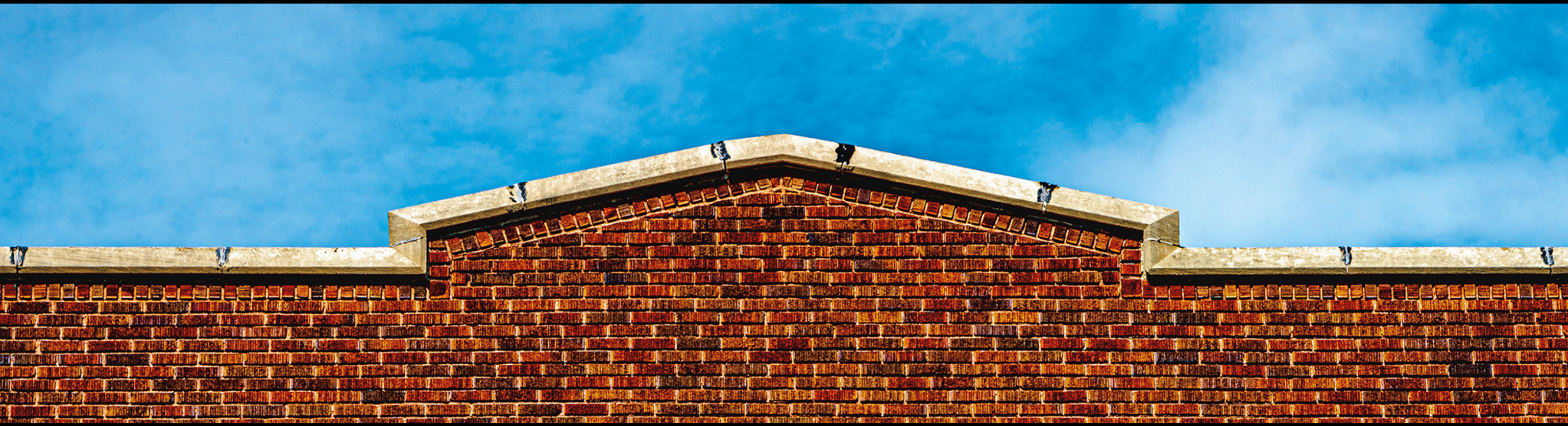


THE GRAPHIC ARTS BUILDING

DAYTON, OH

Historic Building, Adaptive Reuse



























EAST STAIR
FLOORS 1-5
ROOF ACCESS

2

FLOOR OF

FLOOR 2
EXIT DOWN
TO FLOOR 1



CURV'S PASSION FOR

REVITALIZATION

Perhaps your building isn't a historic building at all, but you have a new build in a historic neighborhood or district. That is something to celebrate too! Curv finds beauty in capturing that which expresses the neighborhood's unique character and lifestyle.

Our team of designers will conceptualize, ideate, or collaborate to bring any story, your story, to life with unique signature graphics.

THE DEXTER

CLEVELAND, OH

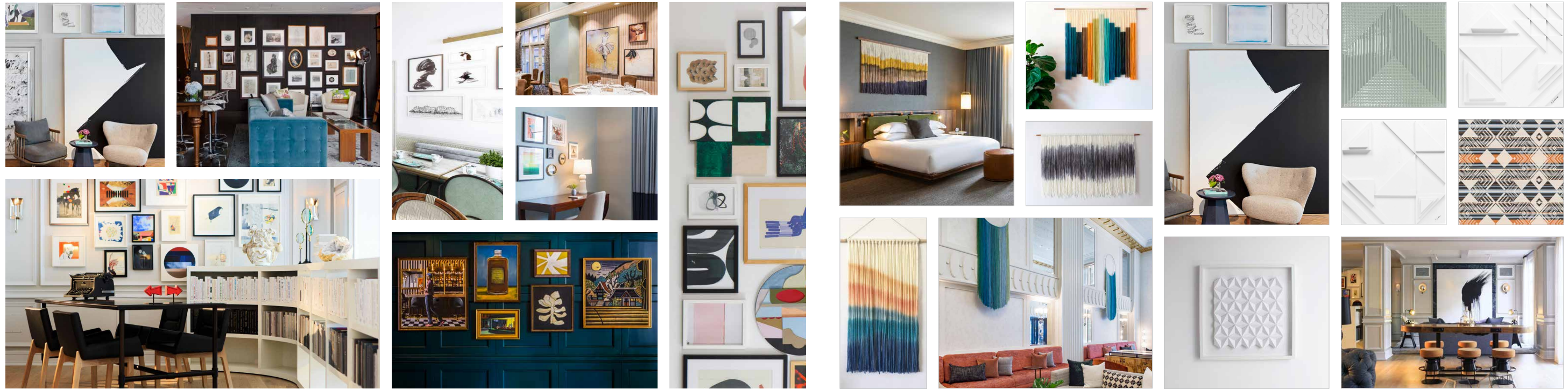
New Build in a Historic District





THE
★
★
★
DEXTER
APARTMENTS

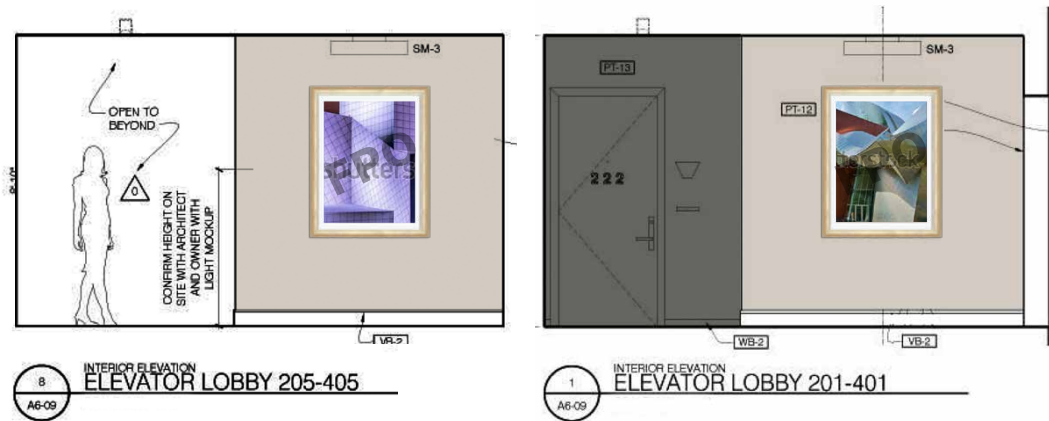




2nd-5th Floor Art Locations

Framed Art Design Intent : Elevator Lobbies

Design Intent:
Oversized Detail Abstracts of Cleveland Architecture
in color, framed, and matted.
42" x 54"



2nd-5th Floor Art Locations

Framed Art : Elevator Lobbies

2nd Floor - Elevator Lobby
The Cleveland Museum of Art



3rd Floor - Elevator Lobby
Cleveland Public Library



4th Floor - Elevator Lobby
Rock and Roll Hall of Fame



2nd Floor - Elevator Lobby
West Side Market Detail



3rd Floor - Elevator Lobby
The Cleveland Arcade Detail



4th Floor - Elevator Lobby
West Side Market Ceiling



SELECTED+
APPROVED 03.12.21

Frame and Art Information:
Frame Outer Dimension: 42" x 54"
Frame Style: NC65401
Nurre Caxton, Treviso 65401-2 3/4" Sterling Silver

Art Board Dim: 37" x 49"

Acrylic Dimension: 37" x 49"

Mat: Single, #MDM900-4,
Mat Opening: 31" x 43" vertical

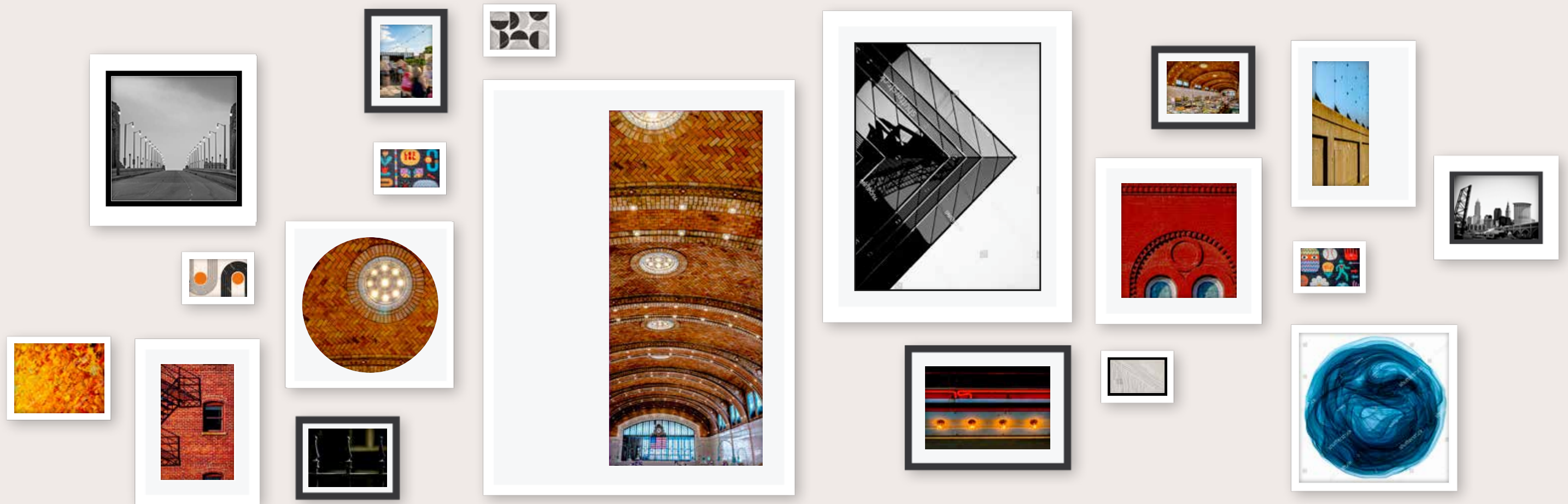
Frame Orientation: Vertical

Qty: 7 of this style

5th Floor - Elevator Lobby
Heinen's Grocery Cleveland







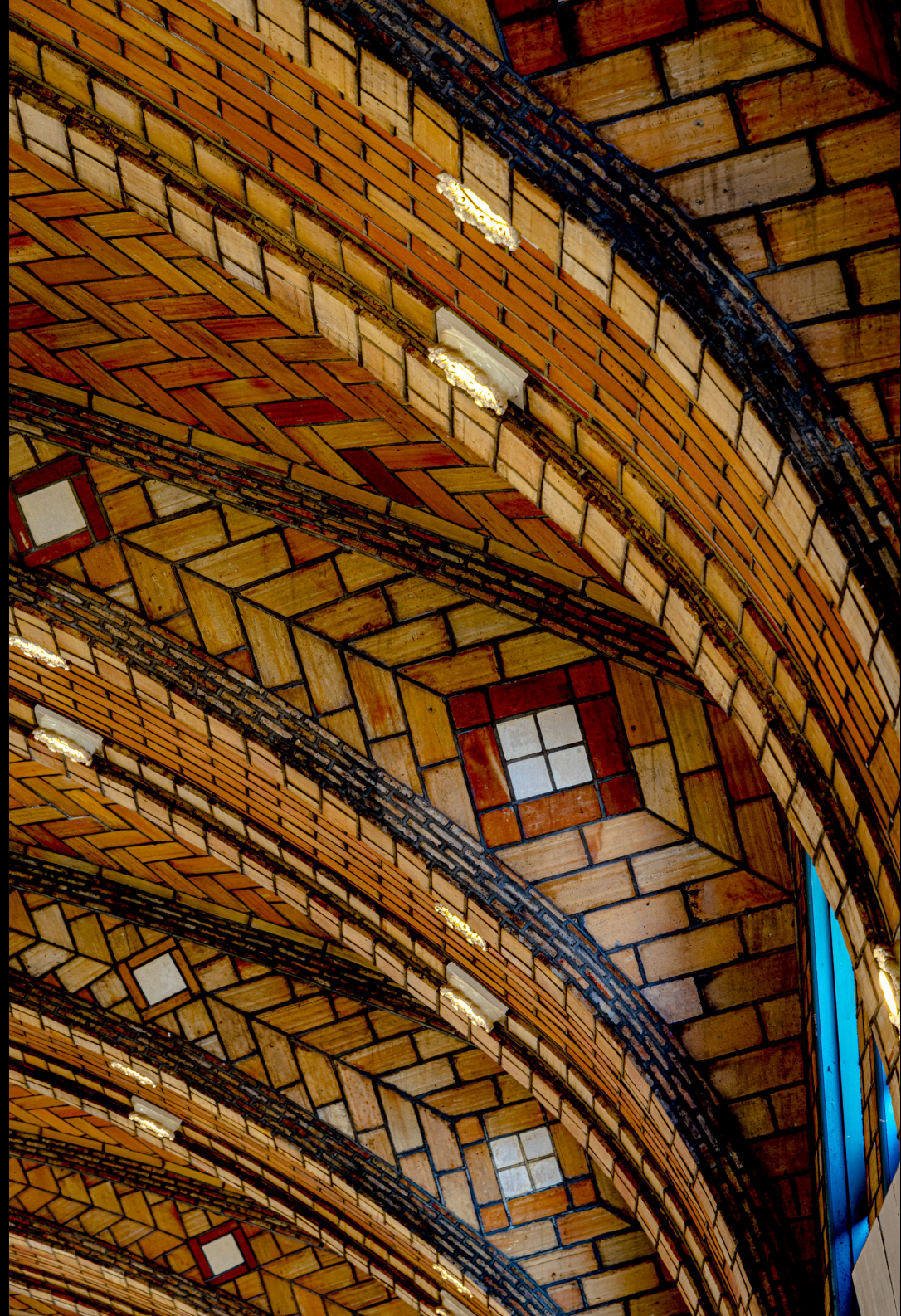




SPRINKLER
ROOM











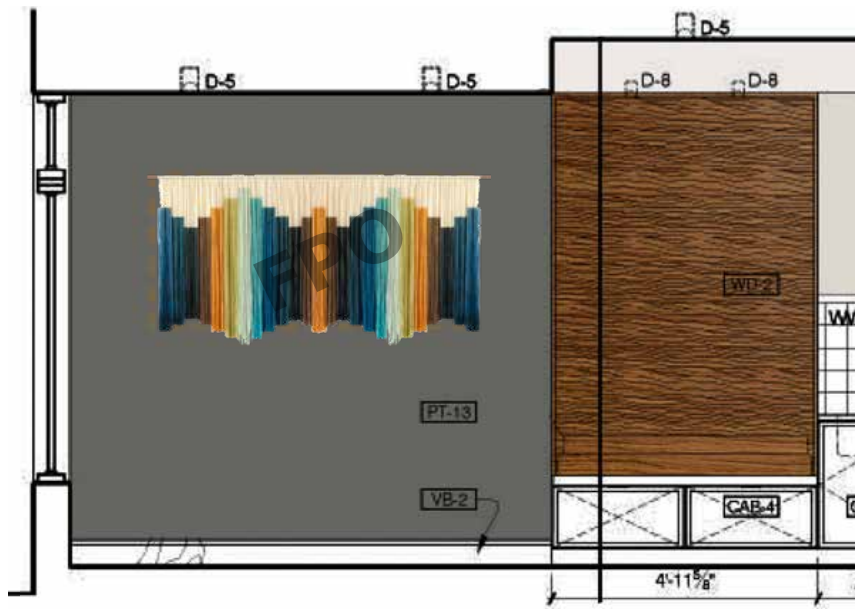
RESTROOM



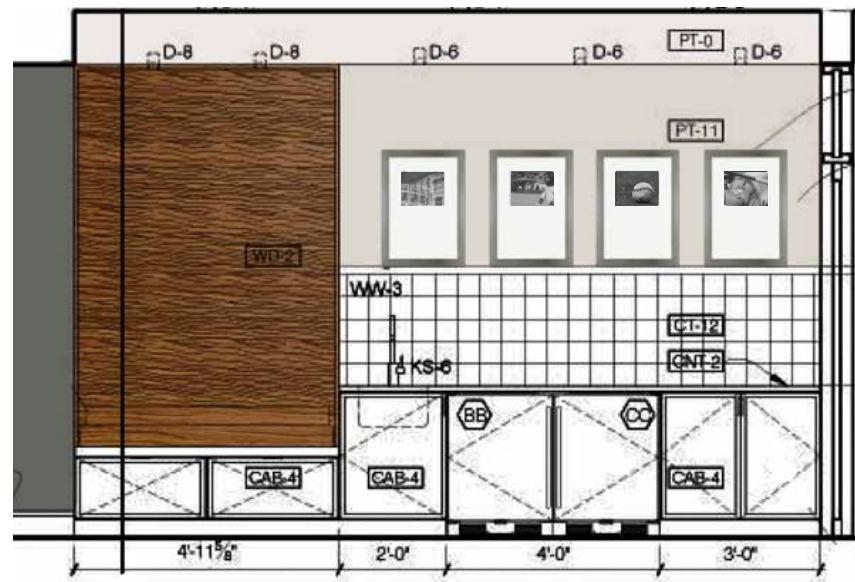


RESTROOM

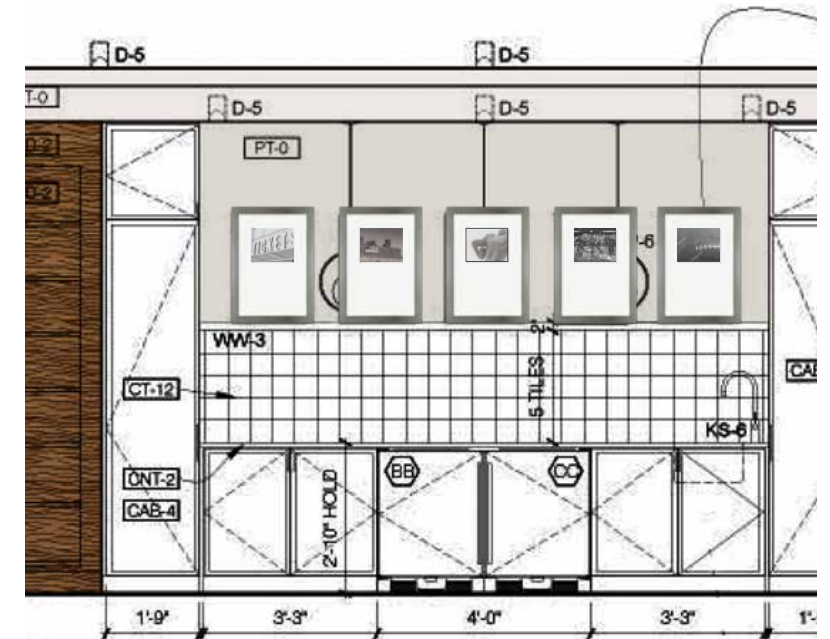




9
A6-08
INTERIOR ELEVATION
GAME ROOM 514
Geometric colorblocking



9
A6-08
INTERIOR ELEVATION
GAME ROOM 514



9
A6-08
INTERIOR ELEVATION
CITY LOUNGE 513







RIVER & RICH

COLUMBUS, OH

New Build in a Historic District















SULLIVANT

A RIVER'S CROSSING

In 1816 Lucas Sullivant built the first bridge across the Scioto River. The 340-foot long wooden toll bridge led from Columbus to Franklinton near where the Broad Street Bridge is now. The bridge would later be replaced with several renditions to follow, but this bridge marked a pivotal point for Franklinton's transportation.

THE RIVER RATS

Built in 1896 and home to the nicknamed "River Rats," Firehouse #10 was the first Franklinton firehouse station. Powered by 6 horses, the total cost for the facility was \$22,259.

THE FLOODS OF FRANKLINTON

Described as one of the most devastating weather-related disasters in Columbus' history, The Great Flood of 1913 submerged the Franklinton area under almost 25 feet of water. Nearly 100 people died, 300 homes and businesses were destroyed, and over 4,000 damaged. Five decades later Franklinton once again fell victim to the rising waters of the Scioto River in 2013, which returned again by destruction. Franklinton would once again prevail.



FRANKLINTON RISING

In 1883, the construction of a floodwall began along a seven-mile stretch of the Scioto River. Eleven miles and \$114 million dollars later, the floodwall's completion was one of the most significant city advancements and saw property values rise from credits as high as 30%.



A PEACE TREE

To ensure success against the British in 1813, it was determined that the Native Americans remained neutral. General William Henry Harrison summoned the region's Indians to take place in Lucas Sullivant's home for a peace conference. Surrounded by his officers under an elm tree, Harrison delivered a speech to 30 chiefs and warriors whose unity was established.

THE NATIVE ROAD

Franklinton, Ohio, was the first settlement in the region. It was the first settlement in the region.

GIFT STREET

A CENTENNIAL CELEBRATION

The 100th anniversary of the incorporation of the City of Columbus, Ohio, was celebrated in 1916. The city of Columbus celebrated the centennial of its incorporation in 1816.

THE POST OFFICE

Building 107, the first brick building in Franklinton, was built in 1816. It was the first brick building in Franklinton.

CELEBRATION OF LIFE

The first celebration of the city's history was held in 1816. It was a celebration of the city's history.

THE FLORENCE AND OHIO CENTRAL DEPOT

Franklinton had an early depot. It was a depot for the Florence and Ohio Central Railroad.

THE FOUNDING OF FRANKLINTON

Franklinton was founded in 1816. It was the first settlement in the region.

THE BOTTOM

The bottom of the Scioto River was a significant area. It was a significant area for the city.

**We look forward to partnering with you
for all of your graphic needs!**

THANK YOU

614.890.2878

www.curvimaging.com

Westerville, OH

